

DryMix Processing

FIBC Dischargers SBB

10



Description ▼

The SBB FIBC Discharger consists of a mild steel frame complete with material discharge hopper and an upper mobile cross bar for lifting of the filled up bulk bag by forklift truck into the Discharger.

Function ▼

The SBB is a modular system for discharging Flexible Intermediate Bulk Containers (Big Bags) in different configurations depending on the application. Easy introduction of the FIBC into the support frame and dust-free discharging along with a variety of options make the SBB extremely user-friendly.



Application ▼

SBB FIBC Dischargers are used to discharge additives contained in FIBCs to be transferred to a weigh hopper from where the material can be conveyed pneumatically or mechanically into the mixer.

Benefits ▼

- ✓ **Modular design;**
- ✓ **Compact shipping dimensions;**
- ✓ **Easy to install;**
- ✓ **Complete dust-free discharging from bag corners even with compressed powder.**

DryMix Processing

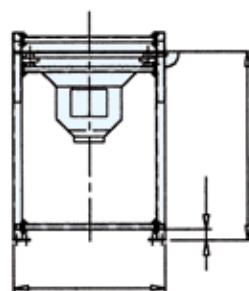
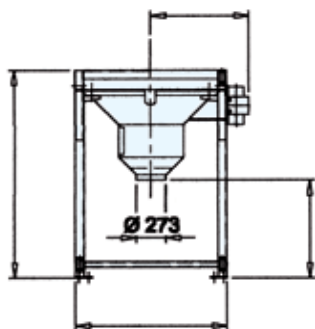
FIBC Dischargers SBB



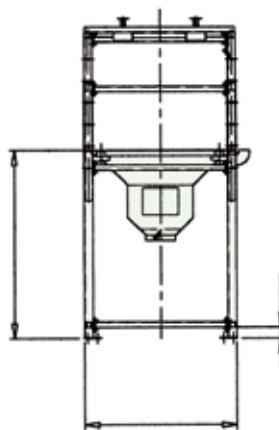
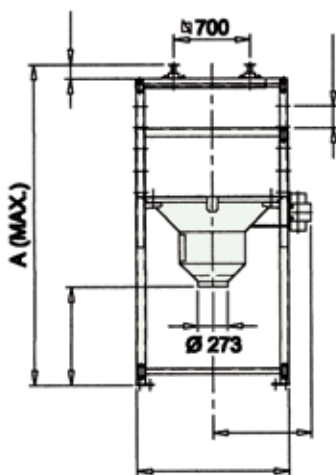
Technical Features / Performance ▼

- ▶ Construction material: mild steel
- ▶ Vibrating outlet cone fitted with outlet opening hatchway

Overall Dimensions ▼



TYPE	A	B	C	E	F
SBB. 125. C	1,914	1,400	832	100	1,734
SBB. 155. C	2,490	1,800	1,047	160	1,880



TYPE	A max.	B	C	D	E	F
SBB. 125. S	3,960	1,400	832	130	100	1,734
SBB. 150. S	4,307	1,800	1,047	180	160	1,800

DS.120.SBB EN March 2013.100
Rights reserved to modify technical specifications.



EXTRAC®



This datasheet might not show the complete range but only the models specialised for the application.

www.wamgroup.com