

Concrete Production

FIBC Dischargers SBB

14



Description ▼

The SBB FIBC Discharger consists of a mild steel frame complete with material discharge hopper and an upper mobile cross bar for lifting of the filled up bag by forklift truck into the Discharger.

Function ▼

The SBB is a modular system for discharging Flexible Intermediate Bulk Containers (Big Bags) in different configurations depending on the application. Easy introduction of the FIBC into the support frame and dust-free discharging along with a variety of options make the SBB extremely user-friendly.

The four loops of the FIBC are attached to the hooks of the detached cross bar that has previously been laid on top of the FIBC. The cross bar with the attached FIBC is then picked up by a forklift truck and introduced into the frame of the SBB Discharger. Once the FIBC has settled on the rubber seal of the discharge hopper the outlet closing rope of the FIBC can be pulled open through the inspection hatch of the discharge hopper. One-way bulk bags are cut open by a pyramid-shape cutting knife.



Application ▼

SBB FIBC Dischargers are used to transfer microsilica (silica fume) contained in FIBCs to a silo for storage from where the material can be conveyed pneumatically or mechanically (see POWPUMP™ sheet) into the silo.

Benefits ▼

- ✓ **Modular design;**
- ✓ **Compact shipping dimensions;**
- ✓ **Easy to install;**
- ✓ **Complete dust-free discharging from bag corners even with compressed powder.**

Concrete Production

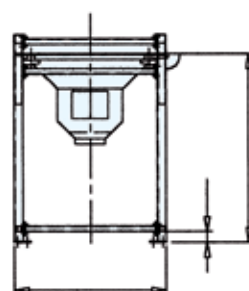
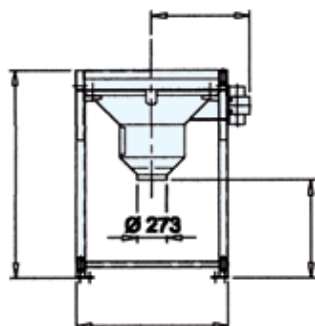
FIBC Dischargers SBB



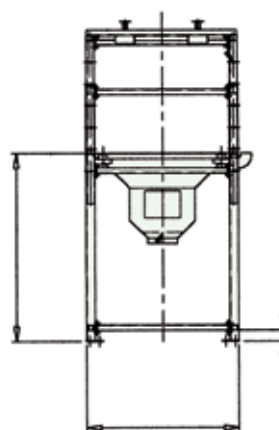
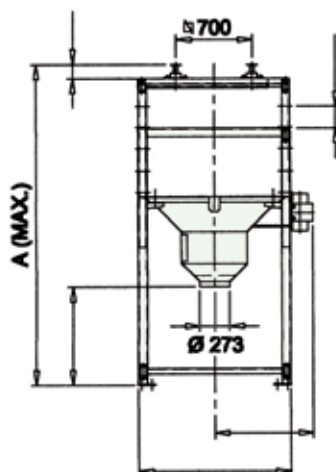
Technical Features / Performance ▼

- ▶ Sturdiness thanks to the steel structure
- ▶ Vibrating outlet cone fitted with outlet opening hatchway

Overall Dimensions ▼



TYPE	A	B	C	E	F
SBB. 125. C	1,914	1,400	832	100	1,734
SBB. 155. C	2,490	1,800	1,047	160	1,880



TYPE	A max.	B	C	D	E	F
SBB. 125. S	3,960	1,400	832	130	100	1,734
SBB. 150. S	4,307	1,800	1,047	180	160	1,800